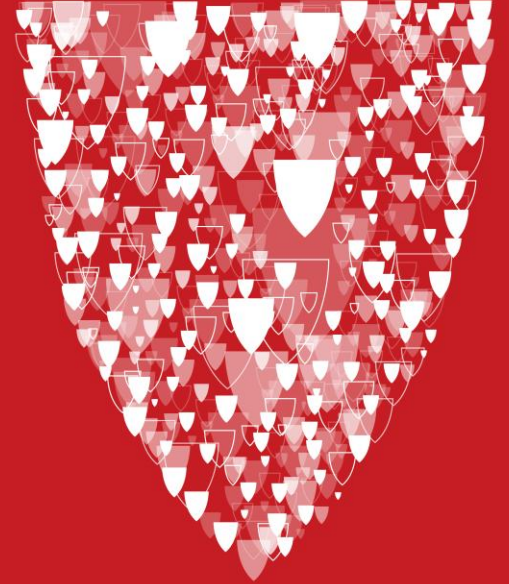


# ***One Mission, Many Voices: Uniting Operations, Medicine, and Nursing for Better Outcomes***

Ashley Carlucci DNP, MHA, RN, CEN, CENP

Christopher Dussel MD, MBA, CPE, FACEP, FACHE

James Hill MD, MBA, CPE, FASA, FACHE



# Agenda

---

Introduction

---

Understanding The Triad Leadership Model

---

Cultivating Effective Clinical and Administrative Leader Relationships

---

Emotional Intelligence in Leadership

---

Common Challenges and Pitfalls

---

Discussion

# Which Roles in Healthcare Do You Find Most Difficult to Relate To?



Physician Leaders?



Nurse Leaders?



Human Resource Leaders?



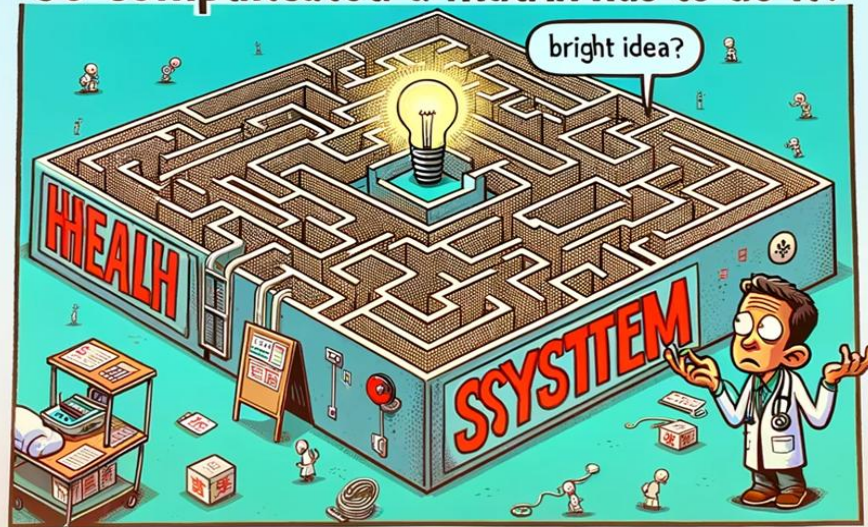
Operational Leaders?



Finance Leaders?

# Healthcare...

So complicated a matrix has to do it?





# Advantages in Healthcare?



# Challenges of the Matrix Structure of Healthcare

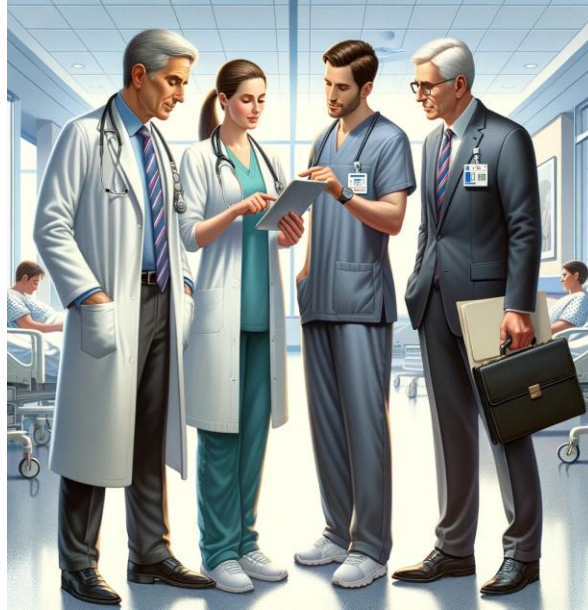
- Complex Reporting Lines
- Increased Potential for Conflict
- Communication Challenges
- Decision-Making Delays
- Resource Allocation Conflicts
- Higher Management Overhead
- Employee Stress and Burnout
- Cultural Challenges
- Leadership Skills Requirement





# How Do We Bridge the Gaps in Modern Healthcare?

# Triad Leadership



Offers a solution for the challenges posed by the matrixed reporting structure of healthcare

## Shared Vision and Goals

- The triad team should work towards the “North Star” of the Organization
- Aligning departmental objectives with the overall mission of the healthcare facility.
- Mayo Clinic and other high performing healthcare organizations have embraced triad leadership with the shared vision that “The Needs of the Patient Come First.”



# Who is Your Most Trusted Colleague Today?

Another Physician?

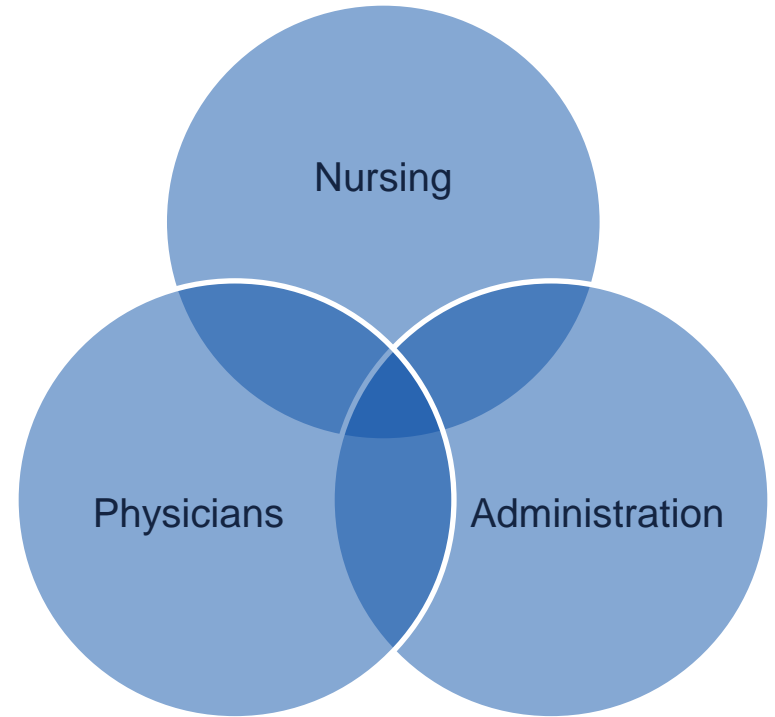
Colleague From Different Training Background?

Triad of Leadership

Trust No One...

# Triad Leadership Models

- Historical leadership models in healthcare focused primarily on either administrative or clinical leadership.
- The evolving healthcare challenges necessitated a more integrated approach.
- Triad leadership emerged as a solution to bridge gaps between different healthcare disciplines.



# Collaborative Decision Making

- Decision-making in triad leadership is a collective process.
- Each leader brings their unique perspective, ensuring comprehensive evaluation of decisions.



American Journal of Infection Control

journal homepage: [www.ajicjournal.org](http://www.ajicjournal.org)



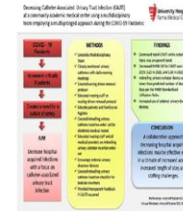
Practice forum

Decreasing Catheter-Associated Urinary Tract Infection (CAUTI) at a community academic medical center using a multidisciplinary team employing a multi-pronged approach during the COVID-19 pandemic



Amy Whitaker DO, MS, MBA<sup>®</sup>, Gail Colgrove BS, RN, CIC, Maria Scheutzow BSN, RN, CIC, Meghan Ramic MSN, RN, Kim Monaco BSN, RN, James L Hill Jr. MD, MBA

University Hospitals Parma, Parma, OH



# Balanced Perspectives



The physician leader ensures clinical excellence, the nursing leader focuses on patient care and advocacy, and the administrative leader brings operational and financial insight.



This balance ensures that patient care is efficient, effective, and patient-centered.

# Case Study: COVID Staffing Crisis

*Hospital X Faces a Severe Shortage of RNs. While recruiting contract labor, quality and communication become concerns for patients, medical staff, and other hospital staff.*

Triad Solution From a Balanced Perspective:

- Physician, Nursing, Hospital Administrative Staff came together to craft a solution. Place Nurse Practitioners on the hospital floors to serve as a resource for RNs, rounding partners for physicians, and educators for patients, during the day shift.
- Night shift was supported by clinical coordinators as part of the care team of tomorrow initiative, taking core staff and having them supervise contractors to guarantee quality, patient experience, and throughput.

# Interdisciplinary Communication

## Chat With Leadership

Twice a month Chief Operating Officer, Chief Medical Officer, Chief Nursing Officer meet with 12 employees and have approximately a 1 hour discussion session about the current state of healthcare (nationally and locally), and allow them to ask questions and enjoy a good discussion.



Effective communication is essential for aligning goals and strategies among the triad members.



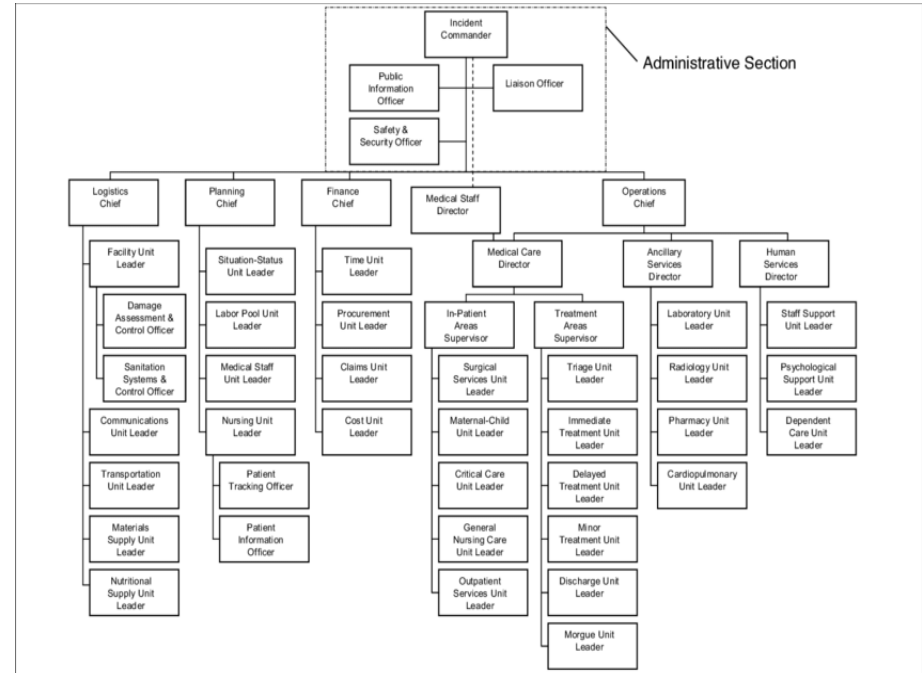
Strategies for effective communication, such as regular meetings, shared platforms, and clear protocols.



Importance of communication in resolving conflicts and ensuring a cohesive team approach.

# Flexibility and Adaptability

- Healthcare is a dynamic field; triad leadership allows for superior flexibility in the face of disruption
- Embracing innovations, regulatory changes, and evolving patient needs
- COVID-19 HICS Systems



# Challenges, Barriers, Opportunities



**Cultural Resistance**



**Resource Allocation**



**Consistency in Application**

# Where is Your Organization in Its' Leadership Journey

---

Just a Bunch of Silos

---

A group of Kingdoms Occasionally at Peace, Occasionally at War

---

A Complex Bureaucratic Matrix Organization

---

A Highly Collaborative Triad Organization



# **Cultivating Effective Clinical & Administrative Leader Relationships**

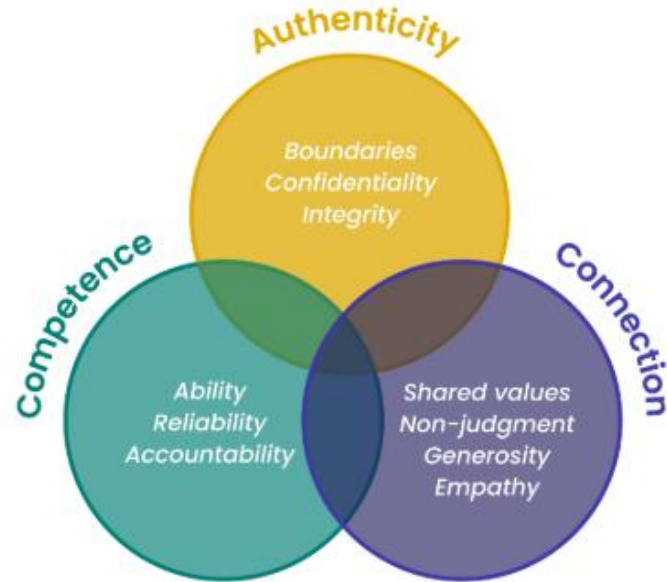
# The CMO's Role in Fostering Clinical and Administrative Leadership

- The CMO as a bridge between clinical staff and administrative leadership
- Importance of alignment between clinical care and organizational objectives
- Clinical and administrative leaders working in tandem



# Building Trust Between Clinical & Administrative Leaders

- Trust as the cornerstone of any effective leadership relationship
- Listening actively to administrative concerns and clinical needs
- Transparency and open communication as tools for fostering trust
- Emphasizing mutual respect for each other's expertise and challenges



# Bridging the Gap: Understanding Clinical and Administrative Priorities

Clinical leaders focus on patient care, safety, and clinical outcomes

Administrative leaders focus on financial sustainability, efficiency, and operational strategies

Importance of aligning these priorities to achieve organizational success

Strategies for overcoming potential conflicts and misunderstandings

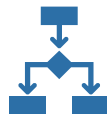
# Strengthening Collaboration Through Joint Decision-Making



The value of shared decision-making in clinical and operational matters



Involving both clinical and administrative leaders in key decisions such as policy, budget, and resource allocation



Examples of successful collaborative decision-making: integrated care models, staffing solutions, and innovation projects



Encouraging inclusive meetings, where all voices are heard

# Sustaining Long-Term Effective Leadership Relationships



Regular, structured communication (weekly or monthly leadership meetings)



Investing in leadership development for both clinical and administrative teams



Building cross-functional teams to work on hospital-wide initiatives



Celebrating successes together and learning from challenges



Continuing education on leadership skills for both clinical and administrative leaders

# Best Practices for Strengthening Triad Leadership Collaboration

**Shared Vision and Goals:** The Triad must work towards a unified vision, balancing patient care quality with operational efficiency.

**Frequent and Transparent Communication:** Regular meetings and direct communication channels to address challenges and opportunities.

**Mutual Respect for Expertise:** Recognizing each leader's unique expertise (clinical, operational, and nursing care) fosters a culture of trust.

**Joint Decision-Making:** Involvement of all three leaders in key decisions (e.g., patient care models, staffing, resource allocation).

**Cross-functional Initiatives:** Collaboration on strategic initiatives such as quality improvement programs, cost reduction, and patient experience.

# Practical Examples



Triad attendance at clinical department meetings/MEC



Identify Informal Leaders, involve them in decision making



Listening sessions

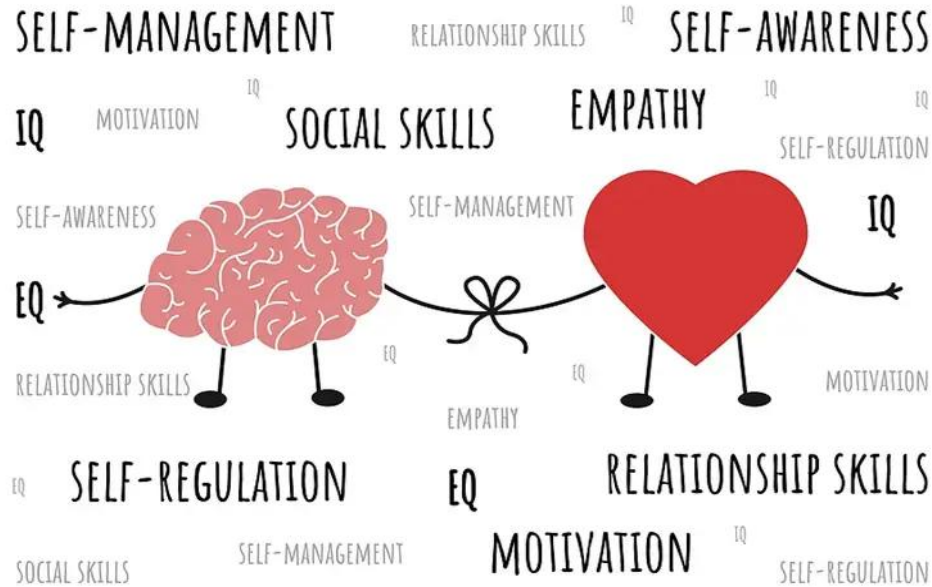


Medical Staff Events: Invite key clinical leaders

# Traits of Effective Clinical Leaders

- Critical Thinking
- Interpersonal Skills
- Integrity and Professionalism
- Clinical Credibility
- **Emotional Intelligence**

# Emotional Intelligence in Leadership



“Life is ten percent of what happens to me and ninety percent of how I react to it” –Charles Swindoll

# Have You Completed a Self Assessment for EI Skills



YES



NO



WHAT'S EI?



Emotional Intelligence can be learned, developed and enhanced

Why improve??

**Definition:** Being aware of one's own emotions and emotions of others and how they correlate with each other

(Bru-Luna et al., 2021)



# Develop EI Competencies

- Self-Awareness:
  - 360 evaluations
  - Self-assessments to enhance self-awareness
  - Enlist a buddy coach
  - Journaling & mindfulness tech
  - Personality & EI Assessments

What are your  
**CORE VALUES?**



- Self-regulation skills:
  - Pause before reacting
  - Mental practice – cognitive reframing
  - Core values
  - Stress management strategies

# Develop EI Competencies

- Social awareness/Empathy: Recognize & understand others' emotions
  - Active Listening
  - Clarify & Reflect
  - Nonverbal Cues
  - Empathy in Action
  - Trust over Control
- Social skills:
  - Influence & Inspire Others
  - Conflict Resolution & Mediation
  - Building Strong, Collaborative Teams
  - Coaching & Mentorship for Growth



# Practice Implications



## Creating a Positive Work Environment

- Work environments can be improved through improving EI skills
  - mutual appreciation
  - recognizing emotions of others
  - building trust and respect
  - receptive to new ideas and opportunities
- Administrators = make programs available
- Clinical leaders = be aware of your level of EQ
  - Recognize strengths and weaknesses of self and team
  - Work to improve this skill as a leader

# Leadership Development Programs

- Why does it matter?
- Program Development
- Succession planning



# Succession Planning in Healthcare Organizations

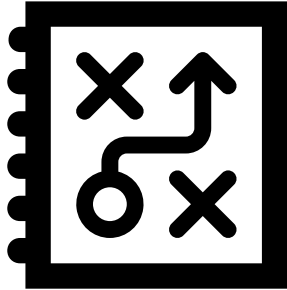
*Strategic  
Talent  
Development*

*Risk  
Mitigation*

*Strengthening  
Leadership  
Teams*

*Cultivating  
Mentorship  
Opportunities*

# Challenges of Implementing Triad Leadership Models in Healthcare



---

Communication Barriers

---

Conflicting Goals

---

Resource Allocation

---

Resistance to Change

---

Accountability Hesitation

# Sustaining Triad Leadership Models in Healthcare



FOSTER A CULTURE  
OF COLLABORATION



INVEST IN  
LEADERSHIP  
DEVELOPMENT



MONITOR &  
MEASURE  
EFFECTIVENESS



ADAPTABILITY &  
INNOVATION

# Conclusion



Healthcare triad leadership emphasizes the importance of collaboration among three key roles: administrative, medical, and nursing leadership.



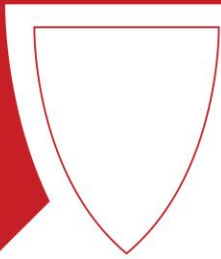
A core principle of this leadership model is the focus on patient-centered care. By combining the strengths and insights of administrative, clinical, and nursing leaders, healthcare organizations can deliver more effective, efficient, and empathetic patient care.



The triad leadership model promotes improved communication and coordination among different departments and levels of staff. This leads to more efficient operations, better resource management, and a more cohesive work environment.



One question for you.....?



**What is One Thing You Will Do  
Differently When You Leave  
Here?**